

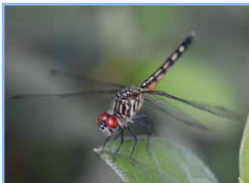


City Nature Challenge: Baton Rouge



BR NATURE BINGO

Below are many common types of wildlife found in the Baton Rouge area. How many can you find during the City Nature Challenge? Can you get 5 in a row to make Bingo? Can you find them ALL? When you think you've found one, help Baton Rouge win by turning it into a science observation. Upload your photos into the iNaturalist app or website!



Dragonfly



Northern Cardinal



Spanish Moss



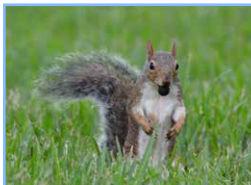
A Frog or Toad



Ants



A cypress tree



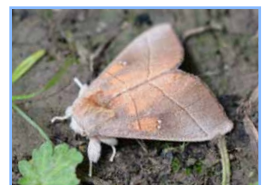
Eastern Gray Squirrel



Spider



A wading bird



Moth



A perching bird



Turtle



**FREE
SPACE**



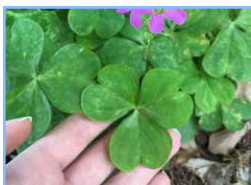
An oak tree



Beetle



Caterpillar



Clover-shaped leaf



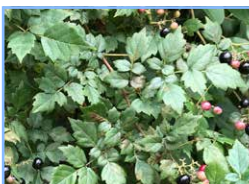
A soaring bird



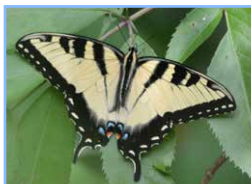
**An insect on
a flower**



A Lizard or Skink



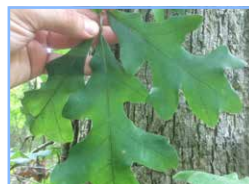
A vine



Butterfly



A wildflower



**A leaf with
crazy edges**



**Northern
Mockingbird**



Invite your friends and family to participate and share your adventures on social media!

#brnaturechallenge <http://www.brnaturechallenge.org>



iNaturalist observation photos courtesy of: Amber King, Mike Tilley, Janie Braud, Matthew Herron and E. Tillet.